

New Type Standard T8 Tube

Standard Tube is an upgraded version fluorescent tube replacement with LED. It has the best configuration of brightness and power efficiency.

Standard tube is designed to replace medium bi-pin T8 and T12 fluorescent tubes. Standard tube fits directly into most fluorescent fixtures providing a simple upgrade to high quality LED lighting. Standard tube is optimized to provide light outputs comparable to fluorescent and delivers the immediate benefits of white-LED lighting; long lifetimes, no maintenance, high efficiency, no mercury, no recycling, no flickering, no buzzing, instant start, cold temperature operation, and high quality light. It provides energy savings of up to 65% over fluorescent applications that require long hours with low occupancy rates such as stairwells, corridors, warehouses, and remote locations. The high quality Standard tube replacement tube is constructed from extruded aluminum to provide a virtually unbreakable, vandal proof lighting solution.

Why our Standard tube?

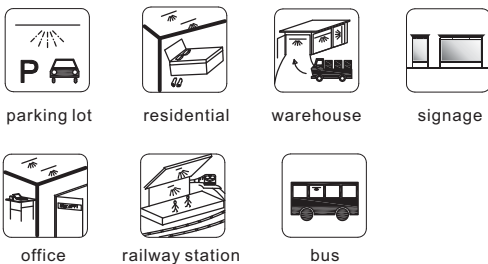
- Much longer life than fluorescent
- 50%~65% Energy-saving over Fluorescent tubes
- Solid State, high shock/vibration resistant
- Work without ballast, Instant soft-start
- No RF interference, No flickering or buzzing
- Quick and easy installation to minimize retrofit costs
- Minimum maintenance costs, Produce little Heat
- No Mercury and other hazardous materials, fully RoHS-compliant
- Continuous operation for white LEDs
- Rated to operate from -4°F to 104°F [-20°C to 40°C], perfect for environments with extreme climates
- Epistar+Intermatix LED packaging solution, no patent trouble
- The newest design
- The best cost-effective
- Complete electricity isolation design, safety prove



Technical Parameters

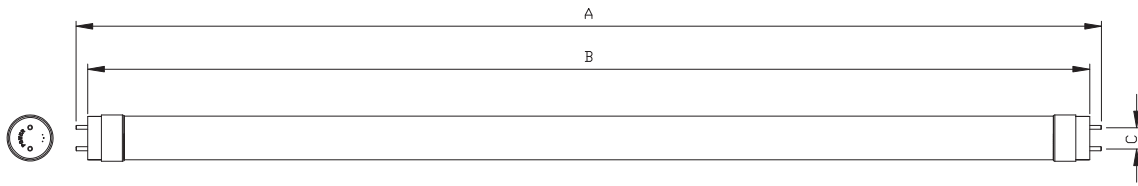
- Standard length 60cm/120cm/150cm/180cm/240cm
- Rated input voltage 100-277V AC, 50/60Hz
Power: 9W/18W/22W/28/34W
- PF (power factor) >0.92
- SMD2835 LED

Applications



◆ ◆ ◆ ◆

Dimensions (Unit: mm/inch)



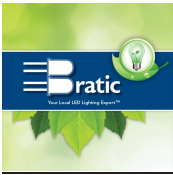
A: 0.6M=603mm/23.7"	1.2M=1213mm/47.7"	1.5M=1513mm/59.5"	1.8M=1778mm/70.0"	2.4M=2386mm/93.9"
B: 0.6M=588mm/23.2"	1.2M=1198mm/47.2"	1.5M=1498mm/59.0"	1.8M=1764mm/69.5"	2.4M=2371mm/93.4"
C: 12.7mm/0.5"				

Specifications

S-tube has 4 kinds of end caps.

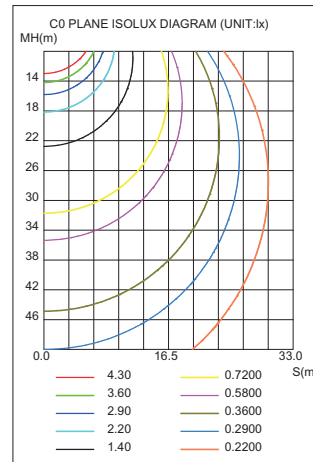
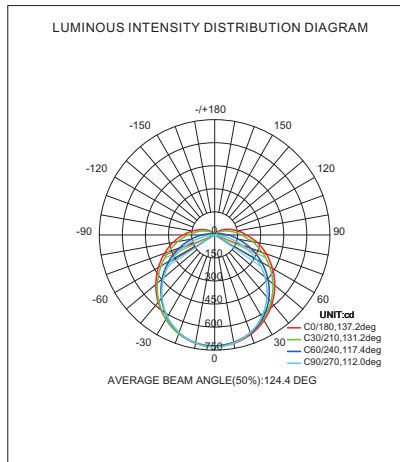


Type	Model number	Color	Light output (lm±10%)	LED Type	LED Q'ty	Length (cm)	Power (W)	CRI	Voltage	PF
Frosted	T8-009-AW-WW-01F	Warm White	1023	SMD 2835	96	60	9	≥80	AC100-277V 50/60Hz	≥0.92
	T8-009-AW-NW-01F	Natural white	1047							
	T8-009-AW-W-01F	White	1037							
	T8-014-AW-WW-01F	Warm White	1814	SMD 2835	144	90	14	≥80	AC100-277V 50/60Hz	≥0.92
	T8-014-AW-NW-01F	Natural white	1945							
	T8-014-AW-W-01F	White	1904							
	T8-018-AW-WW-01F	Warm White	2180	SMD 2835	192	120	18	≥80	AC100-277V 50/60Hz	≥0.92
	T8-018-AW-NW-01F	Natural white	2276							
	T8-018-AW-W-01F	White	2169							
	T8-022-AW-WW-01F	Warm White	2736	SMD 2835	240	150	22	≥80	AC100-277V 50/60Hz	≥0.92
	T8-022-AW-NW-01F	Natural white	2768							
	T8-022-AW-W-01F	White	2751							
T8-028-AW-WW-02F	Warm White	3360	SMD 2835	264	180	28	≥80	AC100-277V 50/60Hz	≥0.92	
T8-028-AW-NW-02F	Natural white	3440								
T8-028-AW-W-02F	White	3528								
T8-034-AW-WW-01F	Warm White	4080	SMD 2835	336	240	34	≥80	AC100-277V 50/60Hz	≥0.92	
T8-034-AW-NW-01F	Natural white	4182								
T8-034-AW-W-01F	White	4284								
Clear	T8-009-AW-WW-01C	Warm White	1161	SMD 2835	96	60	9	≥80	AC100-277V 50/60Hz	≥0.92
	T8-009-AW-NW-01C	Natural white	1169							
	T8-009-AW-W-01C	White	1163							
	T8-014-AW-WW-01C	Warm White	1930	SMD 2835	144	90	14	≥80	AC100-277V 50/60Hz	≥0.92
	T8-014-AW-NW-01C	Natural white	2056							
	T8-014-AW-W-01C	White	2024							
	T8-018-AW-WW-01C	Warm White	2598	SMD 2835	192	120	18	≥80	AC100-277V 50/60Hz	≥0.92
	T8-018-AW-NW-01C	Natural white	2652							
	T8-018-AW-W-01C	White	2594							
	T8-022-AW-WW-01C	Warm White	3145	SMD 2835	240	150	22	≥80	AC100-277V 50/60Hz	≥0.92
	T8-022-AW-NW-01C	Natural white	3167							
	T8-022-AW-W-01C	White	3215							
T8-028-AW-WW-01C	Warm White	3864	SMD 2835	264	180	28	≥80	AC100-277V 50/60Hz	≥0.92	
T8-028-AW-NW-01C	Natural white	3930								
T8-028-AW-W-01C	White	3976								
T8-034-AW-WW-01C	Warm White	4692	SMD 2835	336	240	34	≥80	AC100-277V 50/60Hz	≥0.92	
T8-034-AW-NW-01C	Natural white	4760								
T8-034-AW-W-01C	White	4828								

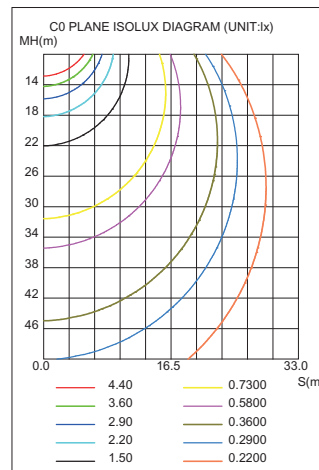
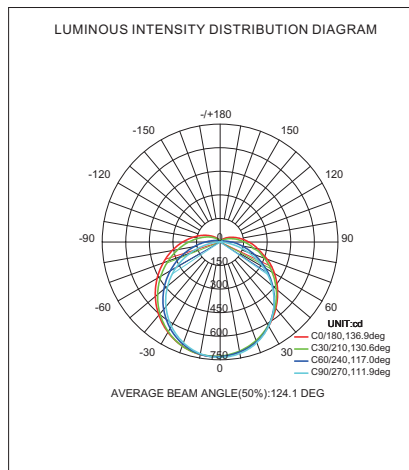


LUMINAIRE PHOTOMETRIC TEST REPORT

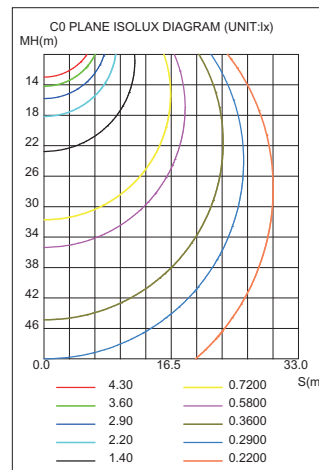
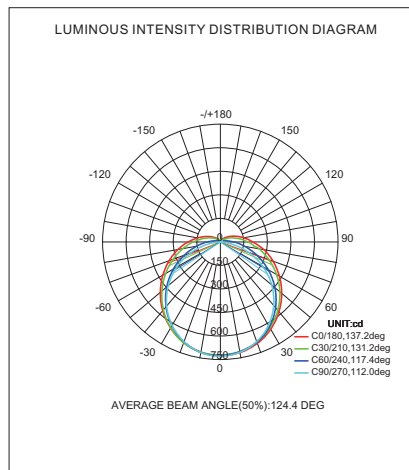
T8-022-AW-W-01F(Frosted)



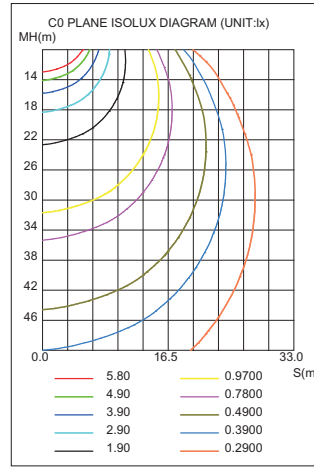
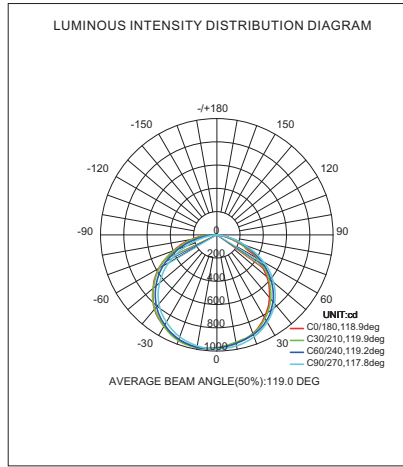
T8-022-AW-NW-01F(Frosted)



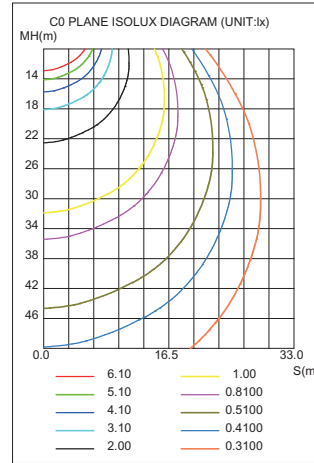
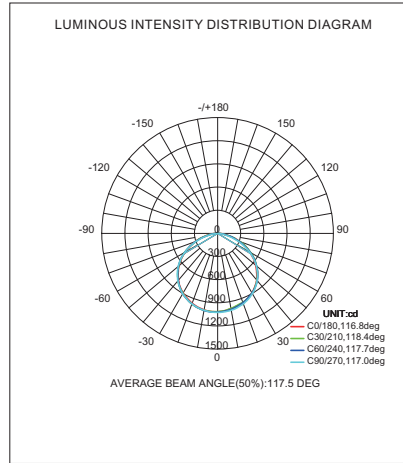
T8-022-AW-WW-01F(Frosted)



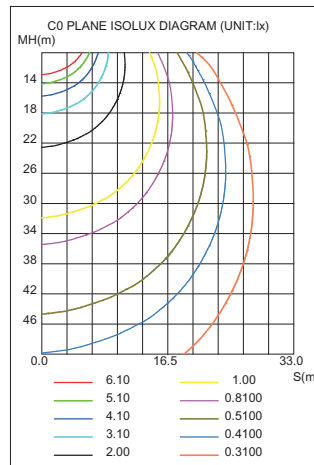
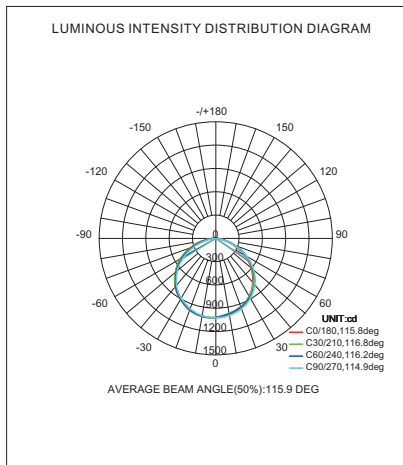
T8-022-AW-W-01C(Clear)



T8-022-AW-NW-01C(Clear)

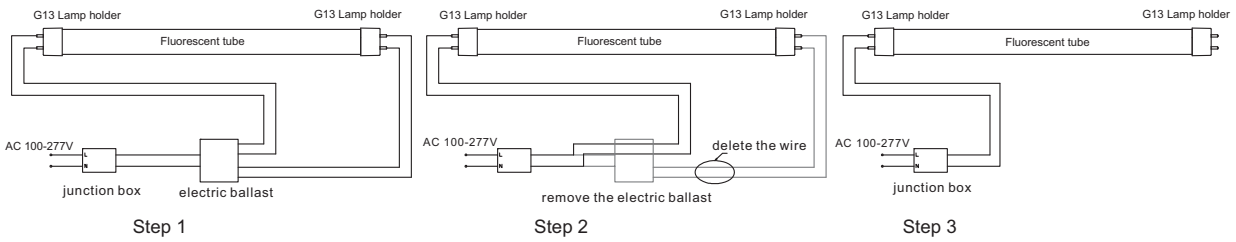


T8-022-AW-WW-01C(Clear)

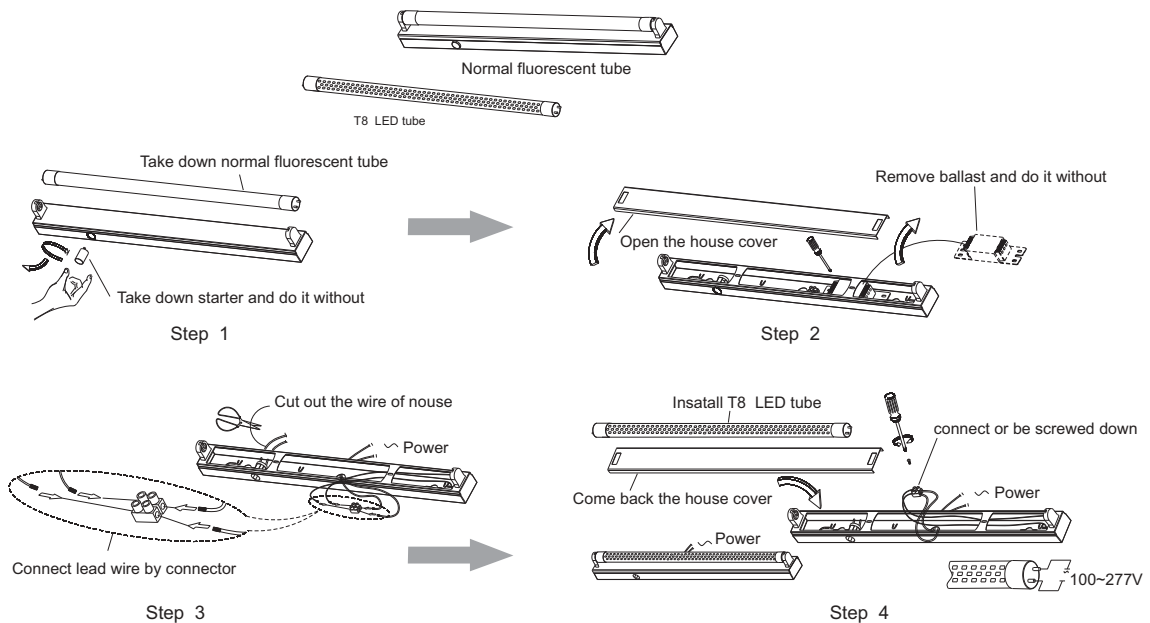
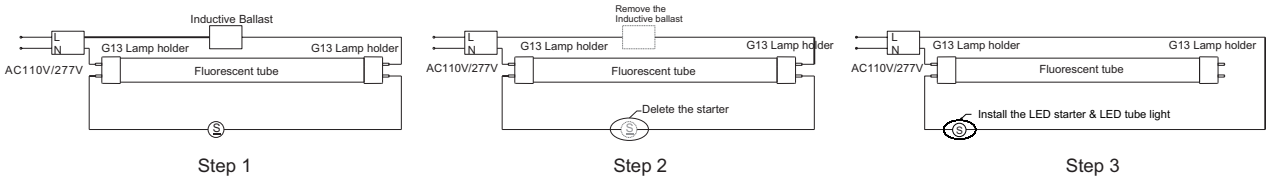


Installation Drawing

How to install LED Tube?



Installation Inductive Ballast



! Notice

Installation information:

Power must be cut off before installation, fix it on the position of installation holes, connection of the power supply must be sealed.

1. Please read the specification first, to make sure the service environment matches the condition in the specification before using.
2. Please confirm the applicable power supply before using.
3. Make sure the switch of product is off before connect to the power supply to prevent electric shock.
4. Operation against rules may damage your property even harm to your personal safety.
5. Preliminarily estimate required quantity of LED lights, then according to the power rating of single flood light to figure out the total power and design power supply plan.
6. Dangerous high voltage, Non-professionals are not allowed to maintain the products.

If the exterior flexible cable or wire is damaged, it must exchange by the supplier, its agent or other similar qualified personnels to avoid dangers.